

## PVCu 3 way ball valves BT

### PVCu Valvole a sfera a 3 vie BT

Rev. Nov 2021

BT valve is a PVC-U 3 way ball valve, ideal for applications in swimming pools, light water treatment and non-critical chemicals.

*La valvola BT è una valvola a sfera a 3 vie in PVC-U, ideale per applicazioni in piscine, trattamento delle acque e prodotti chimici non critici.*

- Radial installation and removal / *Installazione e rimozione radiale*
- Double sided blocked ball / *Sfera bloccata da entrambi i lati*
- Machined ball / *Sfera lavorata*
- Full section area of flow (nominal bore) / *Passaggio totale del flusso (foro nominale)*
- Floating ball / *Sfera flottante*



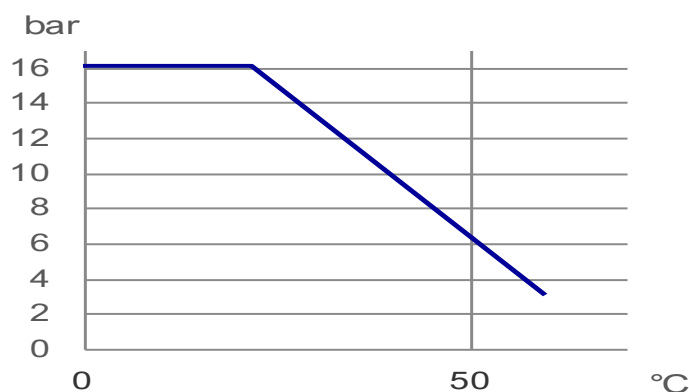
#### TECHNICAL FEATURES / CARATTERISTICHE TECNICHE

NOMINAL PRESSURE / <i>PRESSIONE NOMINALE</i>	PN 16 (20°C)
DIMENSIONS / <i>DIMENSIONI</i>	DN 15 ÷ DN 50 (d.20 ÷ 63 mm – 1/2" ÷ 2")
VALVE MATERIAL / <i>MATERIALE VALVOLA</i>	PVC-U
SEALS MATERIAL / <i>MATERIALE GUARNIZIONI</i>	O-rings: EPDM / <i>O-ring: EPDM</i> Ball seats: PTFE / <i>Tenute della sfera: PTFE</i>
TEMPERATURE RANGE / <i>TEMPERATURA</i>	0°C ÷ 60°C
COUPLING STANDARDS / <i>GIUNZIONI</i>	Solvent welded sockets metric or BSPP threaded sockets / <i>Manicotti per incollaggio metrici o manicotti filettati femmina BSPP</i>
CONTROL OPTIONS / <i>OPZIONI DI COMANDO</i>	Hand-operated / <i>Manuale</i>

#### Operating pressure / *Pressione di esercizio*

Maximum operating pressure for PVC-U: according to temperature as shown in graph.

*Massima pressione di esercizio per il PVC-U: secondo quanto indicato nel grafico in figura.*

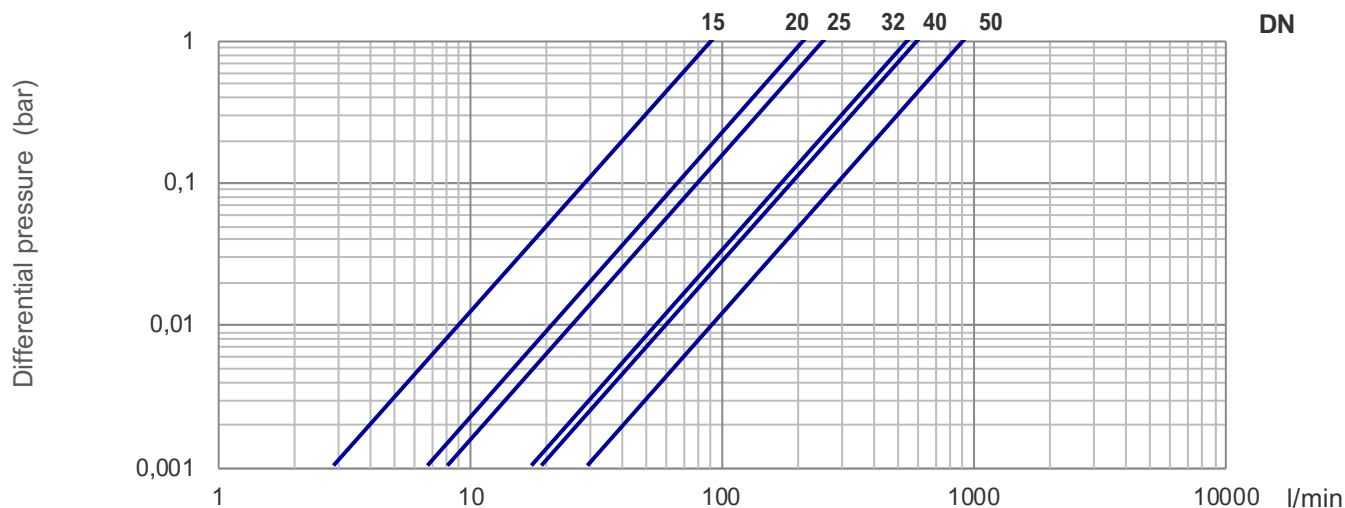
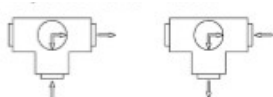


## PVCu 3 way ball valves BT

### PVCu Valvole a sfera a 3 vie BT

Pressure loss / Perdite di carico

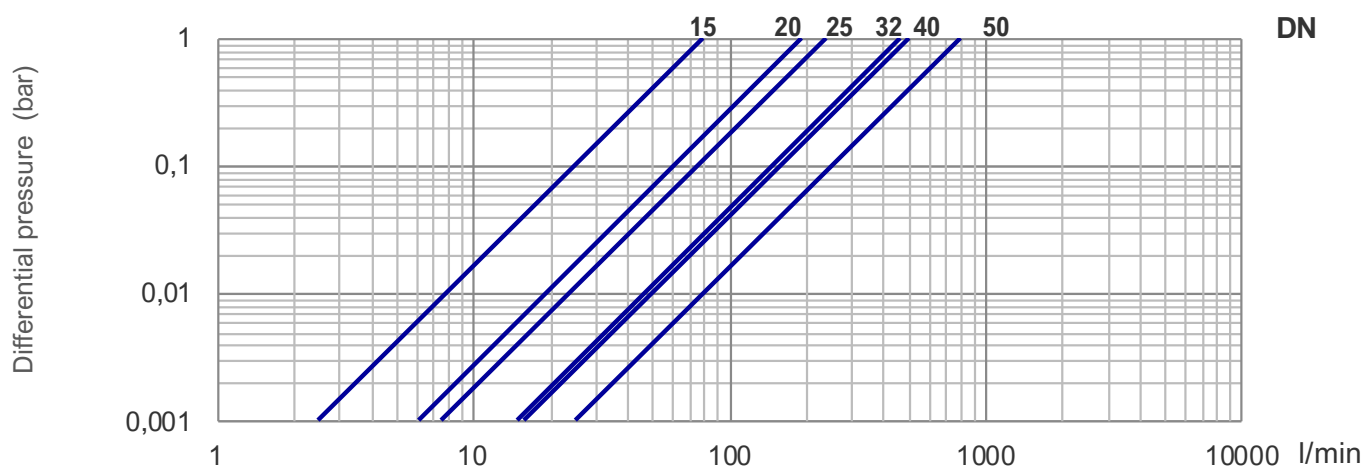
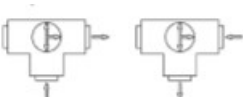
L Port / Porta L.



DN	DN 15	DN 20	DN 25	DN 32	DN 40	DN 50
0.001 bar	2.9	6.9	8.3	17.8	19.3	29.4
1 bar	93	218	261	562	610	930

Pressure loss / Perdite di carico

T Port / Porta T.



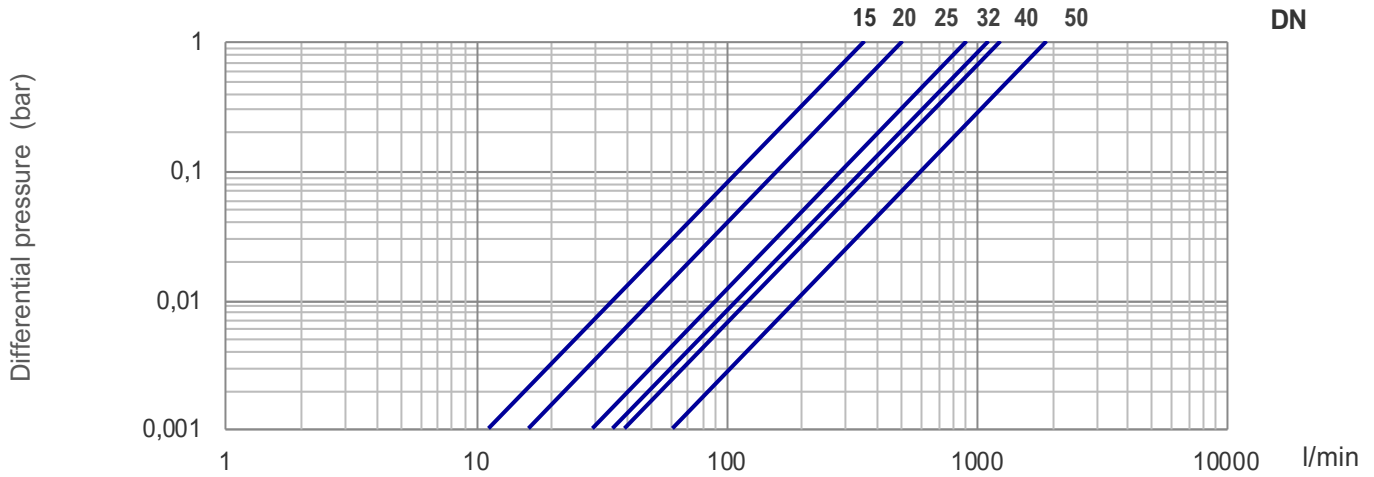
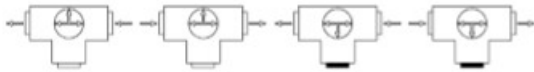
DN	DN 15	DN 20	DN 25	DN 32	DN 40	DN 50
0.001 bar	2.5	6.2	7.6	15	16	25.5
1 bar	80	195	240	473	507	805

## PVCu 3 way ball valves BT

## PVCu Valvole a sfera a 3 vie BT

### Pressure loss / Perdite di carico

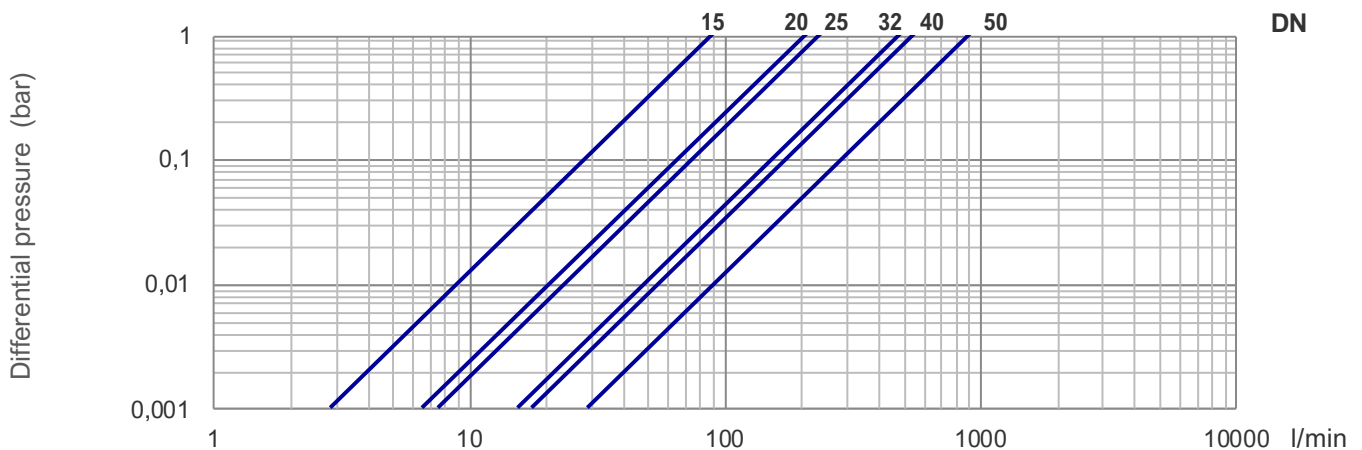
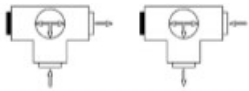
T Port / Porta T.



DN	DN 15	DN 20	DN 25	DN 32	DN 40	DN 50
0.001 bar	6.5	11.4	16.3	35.6	40	61.3
1 bar	166	207	360	515	1127	1940

### Pressure loss / Perdite di carico

T Port / Porta T.

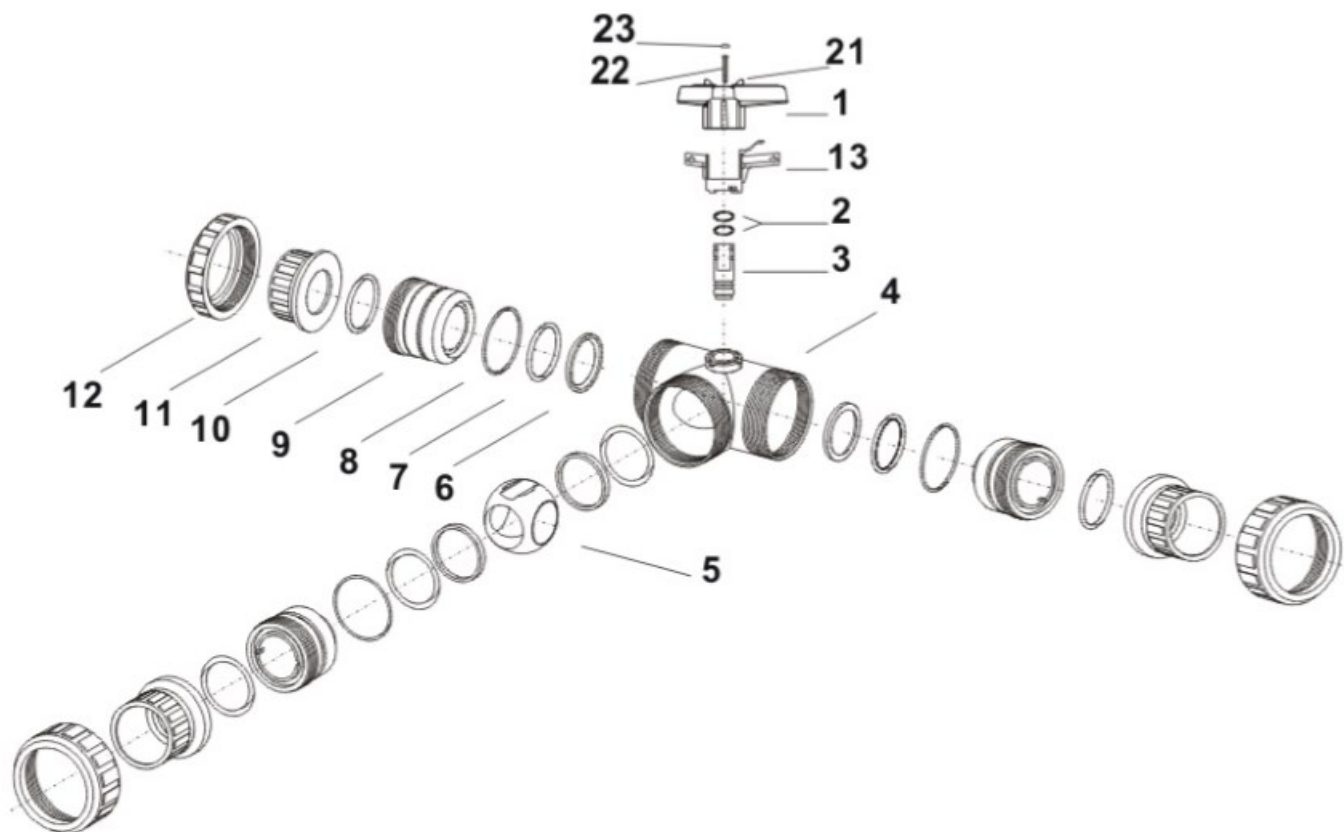


DN	DN 15	DN 20	DN 25	DN 32	DN 40	DN 50
0.001 bar	2.9	6.6	7.6	15.5	17.6	29.1
1 bar	90	210	240	490	555	920

## PVCu 3 way ball valves BT

### PVCu Valvole a sfera a 3 vie BT

#### Components / Componenti



n.	COMPONENT
1	Handle / Maniglia
2	O-ring / O-ring
3	Stem / Asta
4	Body / Corpo
5	Ball L o T / Sfera a L o T
6	Ball seat / Tenuta sfera
7	O-ring / O-ring
8	O-ring / O-ring

n.	COMPONENT
9	Thrust collar / Collare di spinta
10	O-ring / O-ring
11	Socket / Manicotto
12	Nut / Ghiera
13	Spring loaded locking sleeve / Manicotto di blocco caricato a molla
21	Stub tenon for opening thrust collar / Troncone per apertura reggisinta
22	Screw / Vite
23	PLS-labeling insert / Inserito con etichetta PLS

All descriptions and illustrations in this publication are intended for guidance only and shall not constitute a 'sale by description'. All dimensions given are nominal, while changes can be done on the information, products and specifications from time to time for a variety of reasons, without prior notice. The information in this publication is provided 'as is' on the revision date stated on the sheet. Updates will not be issued automatically. This information is not intended to have any legal effect, whether by way of advice, representation or warranty (express or implied). We accept no liability whatsoever (to the extent permitted by law) if you place any reliance on this publication you must do so at your own risk. All rights reserved. Copyright in this publication belongs to Polypipe Italia and all such copyright may not be used, sold, copied or reproduced in whole or part in any manner in any media to any person without prior consent. **EFFAST** is a registered trademark."