

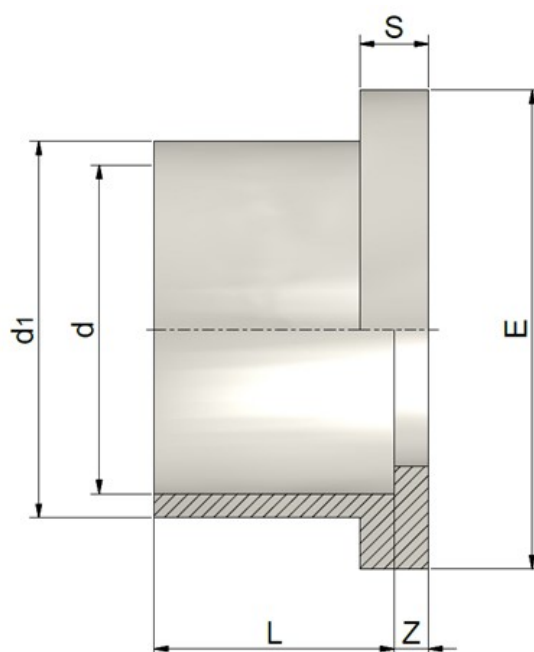
PP-H Fittings for socket fusion jointing

PP-H Raccordi per saldatura nel bicchiere

SERRATED FACE STUB FLANGE

COLLARE RIGATO PER FLANGE

Rev. Jun 2019



Code	d	d1	L	Z	E	S	PN	Weight (g)
RHPQRH0200	20	27	16	3	34	6	10	7
RHPQRH0250	25	33	18	3	41	7	10	11
RHPQRH0320	32	41	20	3	51	7	10	15
RHPQRH0400	40	50	22	3	61	8	10	24
RHPQRH0500	50	61	25	3	73	8	10	34
RHPQRH0630	63	76	30	3	90	9	10	60
RHPQRH0750	75	90	31,5	7	122	16	10	150
RHPQRH0900	90	108	37	4,5	138	17	10	202
RHPQRH1100	110	131	44	5	158	18	10	287

All descriptions and illustrations in this publication are intended for guidance only and shall not constitute a 'sale by description'. All dimensions given are nominal, while changes can be done on the information, products and specifications from time to time for a variety of reasons, without prior notice. The information in this publication is provided 'as is' on the revision date stated on the sheet. Updates will not be issued automatically. This information is not intended to have any legal effect, whether by way of advice, representation or warranty (express or implied). We accept no liability whatsoever (to the extent permitted by law) if you place any reliance on this publication you must do so at your own risk. All rights reserved. Copyright in this publication belongs to Polypipe Italia and all such copyright may not be used, sold, copied or reproduced in whole or part in any manner in any media to any person without prior consent. **EFFAST** is a registered trademark."