

## Technical Datasheet



**PVC-U Foot valves HV**  
***PVC-U Valvole di fondo HV***

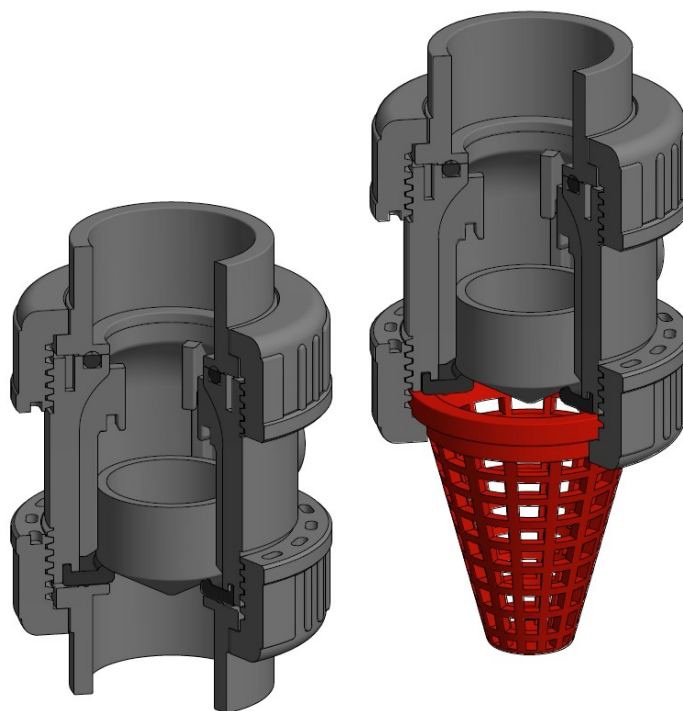
## PVC-U Foot valves HV

### PVC-U Valvole di fondo HV

EFFAST HV valve is a PVC-U foot valve ideal for use in applications that require precise closure. It has no metal parts, making it suitable for use in any type of system.

*Le valvole EFFAST serie HV sono valvole di fondo in PVC-U, ideali per applicazioni che richiedono una chiusura precisa. Essendo prive di parti metalliche, sono adatte come valvole di fondo in impianti di ogni tipo.*

- No metal parts in contact with the fluid.  
*Senza parti metalliche a contatto con il fluido.*
- Version with strainer available.  
*Disponibile nella versione con succhieruola.*
- Marine Application approval.  
*Certificata per applicazioni navali.*



#### TECHNICAL FEATURES / CARATTERISTICHE TECNICHE

DIMENSIONS / DIMENSIONI DN 15 ÷ DN 80

NOMINAL PRESSURE / PRESSIONE NOMINALE PN 16 (20°C)

VALVE MATERIAL / MATERIALE VALVOLA PVC-U

SEALS MATERIAL / MATERIALE GUARNIZIONI EPDM; FKM

TEMPERATURE RANGE / TEMPERATURA 0°C ÷ 60°C

COUPLING STANDARDS / GIUNZIONI

- Metric socket ends for solvent cementing / Manicotti per incollaggio metrici
- BS socket ends for solvent cementing / Manicotti per incollaggio BS
- BSP threaded socket ends / Manicotti filettati BSP



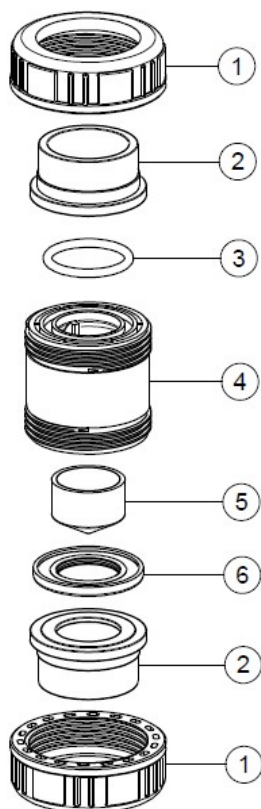
Certifications and approvals: only for items declared on Official Listing or certificates. / Certificazioni: solo per gli articoli dichiarati nelle Official Listing o nei certificati stessi.

# EFFAST

## PVC-U Foot valves HV

### PVC-U Valvole di fondo HV

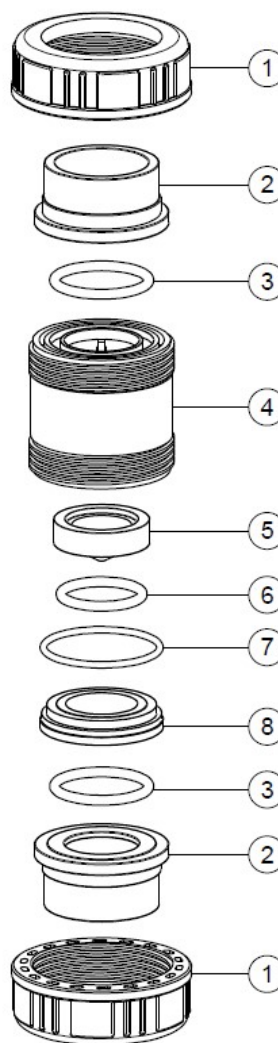
#### Components



DN 15 - DN 50

n.	COMPONENT	MATERIAL	Qty
1	Nut / Ghiera	PVC-U	2
2	Socket end / Manicotto	PVC-U	2
3	Socket end O-rings / O-ring manicotto	EPDM / FKM	1
4	Body / Corpo	PVC-U	1
5	Obturator / Otturatore	PVC-U	1
6	Seat / Guarnizione	EPDM / FKM	1

#### Componenti



DN 65 - DN 80

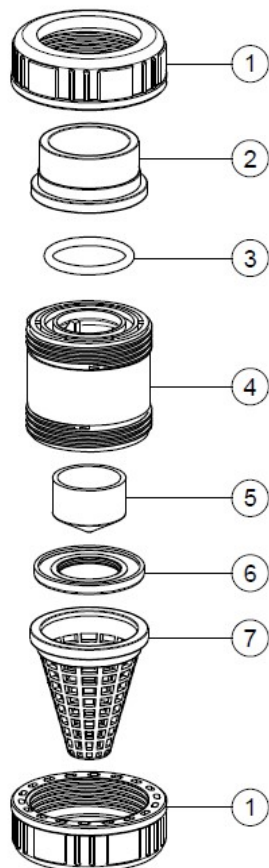
n.	COMPONENT	MATERIAL	Qty
1	Nut / Ghiera	PVC-U	2
2	Socket end / Manicotto	PVC-U	2
3	Socket end O-rings / O-ring manicotto	EPDM / FKM	2
4	Body / Corpo	PVC-U	1
5	Obturator / Otturatore	PVC-U	1
6	Obturator O-ring / O-ring otturatore	EPDM / FKM	1
7	Body O-ring / O-ring corpo	EPDM / FKM	1
8	Seats carrier / Portaguarnizioni	PVC-U	1

## PVC-U Foot valves HV

### PVC-U Valvole di fondo HV

#### Components

Version with strainer

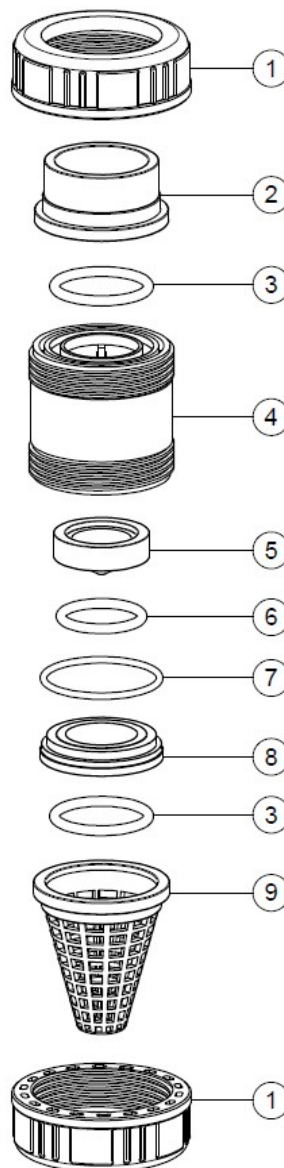


DN 15 - DN 50

n.	COMPONENT	MATERIAL	Qty
1	Nut / Ghiera	PVC-U	2
2	Socket end / Manicotto	PVC-U	1
3	Socket end O-rings / O-ring manicotto	EPDM / FKM	1
4	Body / Corpo	PVC-U	1
5	Obturator / Otturatore	PVC-U	1
6	Seat / Guarnizione	EPDM / FKM	1
7	Strainer / Succhieruola	PP	1

#### Componenti

Versione con succhieruola



DN 65 - DN 80

n.	COMPONENT	MATERIAL	Qty
1	Nut / Ghiera	PVC-U	2
2	Socket end / Manicotto	PVC-U	1
3	Socket end O-rings / O-ring manicotto	EPDM / FKM	2
4	Body / Corpo	PVC-U	1
5	Obturator / Otturatore	PVC-U	1
6	Obturator O-ring / O-ring otturatore	EPDM / FKM	1
7	Body O-ring / O-ring corpo	EPDM / FKM	1
8	Seats carrier / Portaguarnizioni	PVC-U	1
9	Strainer / Succhieruola	PP	1

## PVC-U Foot valves HV

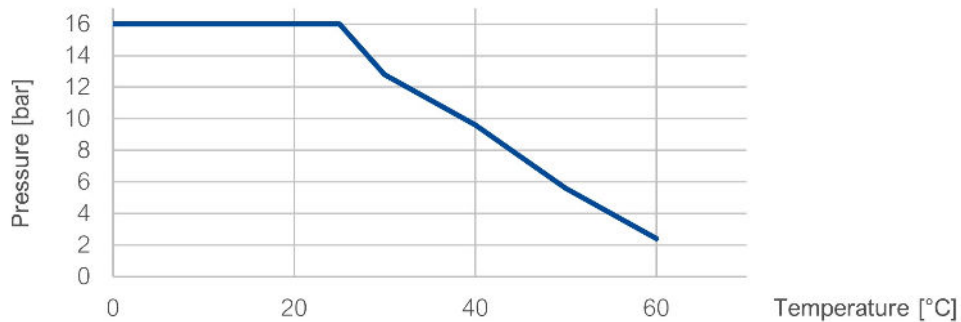
### PVC-U Valvole di fondo HV

#### Operating pressure

Maximum operating pressure depends on operating temperature, as shown in graph. For water and fluids for which the material is classified as chemically resistant. In other cases, a reduction of the nominal pressure PN is required.

#### Pressione di esercizio

La pressione massima di esercizio dipende dalla temperatura di esercizio, come mostrato nel grafico. Per acqua e fluidi per i quali il materiale è classificato come chimicamente resistente. In altri casi, è necessaria una riduzione della pressione nominale PN.



# PVC-U Foot valves HV

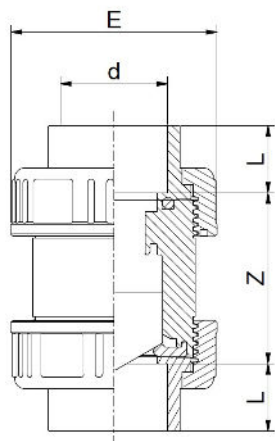
## PVC-U Valvole di fondo HV

### Dimensions

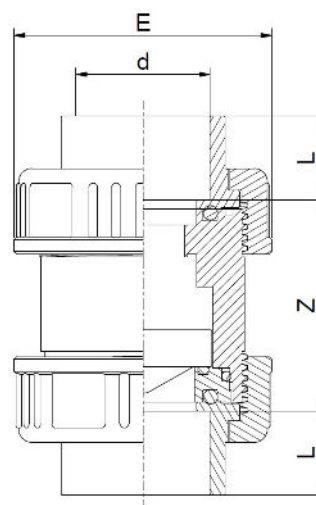
Metric sockets ends for solvent cementing

### Dimensioni

Manicotti metrici per incollaggio



DN 15 - DN 50



DN 65 - DN 80

Code EPDM	Code FKM	d	DN	L	Z	E	PN	Weight (g)
CDRHVD0200	CDRHVD020V	20	15	16	48	49	16	110
CDRHVD0250	CDRHVD025V	25	20	19	54	60	16	180
CDRHVD0320	CDRHVD032V	32	25	22	62	69	16	250
CDRHVD0400	CDRHVD040V	40	32	26	69	80	16	380
CDRHVD0500	CDRHVD050V	50	40	31	81	96	16	600
CDRHVD0630	CDRHVD063V	63	50	39	94	116	16	1000
CDRHVD0750	CDRHVD075V	75	80	44	141	167	16	2800
CDRHVD0900	CDRHVD090V	90	80	51	140	167	16	3000

Dimensions in mm / Dimensioni in mm



# PVC-U Foot valves HV

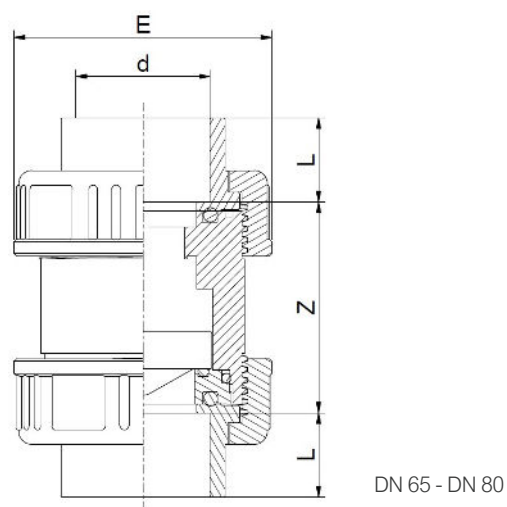
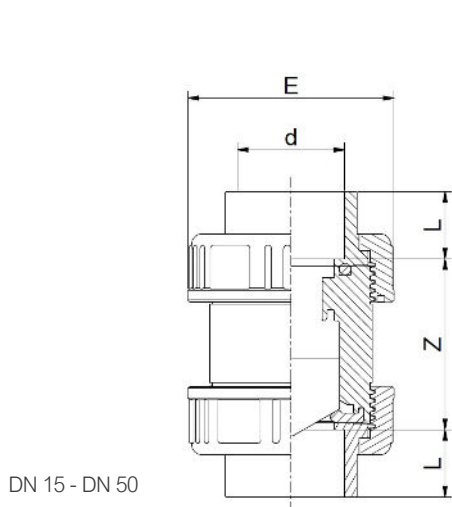
## PVC-U Valvole di fondo HV

### Dimensions

BS socket ends for solvent cementing

### Dimensioni

Manicotti BS per incollaggio



Code EPDM	Code FKM	d	DN	L	Z	E	PN	Weight (g)
CARHVA0200	CARHVA020V	1/2"	15	16	48	49	16	110
CARHVA0250	CARHVA025V	3/4"	20	19	54	60	16	180
CARHVA0320	CARHVA032V	1"	25	22	62	69	16	250
CARHVA0400	CARHVA040V	1"1/4	32	26	69	80	16	380
CARHVA0500	CARHVA050V	1"1/2	40	31	81	96	16	600
CARHVA0630	CARHVA063V	2"	50	38	96	116	16	1000
CARHVA0750	CARHVA075V	2"1/2	80	44	141	167	16	2800
CARHVA0900	CARHVA090V	3"	80	51	141	167	16	3000

Dimensions in mm / Dimensioni in mm



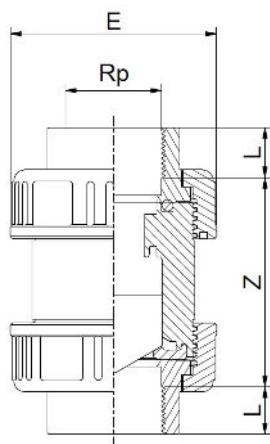
# PVC-U Foot valves HV

## PVC-U Valvole di fondo HV

### Dimensions

#### BSP threaded socket ends

- Thread according to ISO 228-1

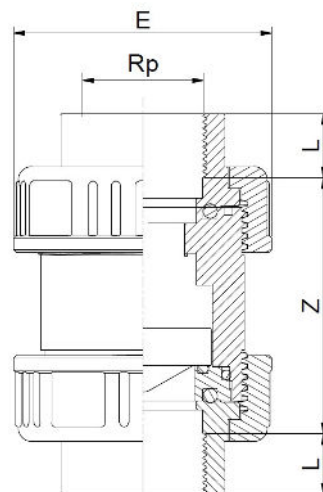


DN 15 - DN 50

### Dimensioni

#### Manicotti filettati BSP

- Filettatura secondo ISO 228-1



DN 65 - DN 80

Code EPDM	Code FKM	Rp	DN	L min	Z max	E	PN	Weight (g)
CERHVE020B	CERHVE020V	1/2"	15	15	50	49	16	110
CERHVE025C	CERHVE025V	3/4"	20	16,3	59,4	60	16	180
CERHVE032D	CERHVE032V	1"	25	19,5	67	69	16	250
CERHVE040E	CERHVE040V	1"1/4	32	21,4	78,2	80	16	380
CERHVE050F	CERHVE050V	1"1/2	40	21,4	87,2	96	16	600
CERHVE063G	CERHVE063V	2"	50	25,7	98,6	116	16	1000
CERHVE075H	CERHVE075V	2"1/2	80	30,2	168,6	167	16	2800
CERHVE090I	CERHVE090V	3"	80	33,3	146,4	167	16	3000

Dimensions in mm / Dimensioni in mm





# PVC-U Foot valves HV

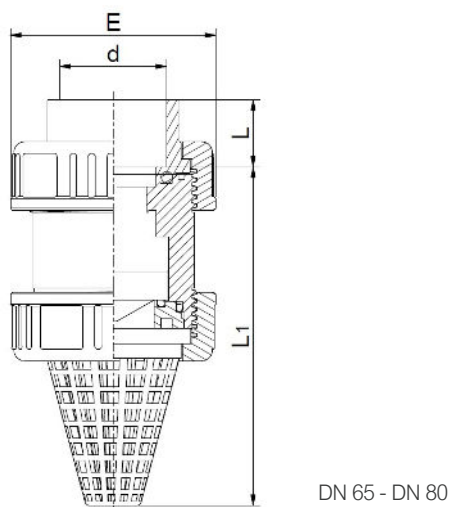
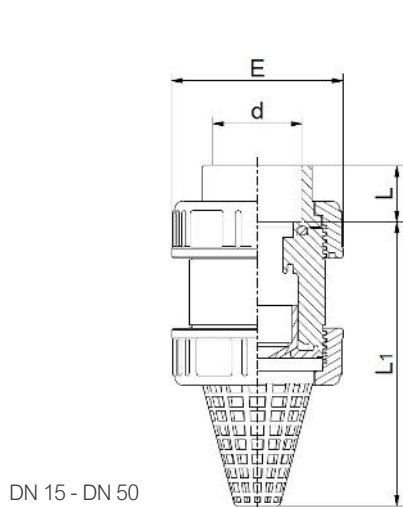
## PVC-U Valvole di fondo HV

### Dimensions

Metric sockets end for solvent cementing and strainer

### Dimensioni

Manicotto metrico per incollaggio e succhieruola



Code EPDM	Code FKM	d	DN	L	L1	E	PN	Weight (g)
CDRHVDZ0200	CDRHVDZ020V	20	15	16	87	49	16	103
CDRHVDZ0250	CDRHVDZ025V	25	20	19	104	60	16	162,5
CDRHVDZ0320	CDRHVDZ032V	32	25	22	121,5	69	16	233,5
CDRHVDZ0400	CDRHVDZ040V	40	32	26	138,5	80	16	347,5
CDRHVDZ0500	CDRHVDZ050V	50	40	31	149,5	96	16	556,5
CDRHVDZ0630	CDRHVDZ063V	63	50	38	179	116	16	923,5
CDRHVDZ0750	CDRHVDZ075V	75	80	44	253	167	16	2673
CDRHVDZ0900	CDRHVDZ090V	90	80	51	141	167	16	2815

Dimensions in mm / Dimensioni in mm





All descriptions and illustrations in this publication are intended for guidance only and shall not constitute a 'sale by description'. All dimensions given are nominal, while changes can be done on the information, products and specifications from time to time for a variety of reasons, without prior notice. The information in this publication is provided 'as is' on the revision date stated on the sheet. Updates will not be issued automatically. This information is not intended to have any legal effect, whether by way of advice, representation or warranty (express or implied). We accept no liability whatsoever (to the extent permitted by law) if you place any reliance on this publication you must do so at your own risk. All rights reserved. Copyright in this publication belongs to Polypipe Italia and all such copyright may not be used, sold, copied or reproduced in whole or part in any manner in any media to any person without prior consent. **EFFAST** is a registered trademark.